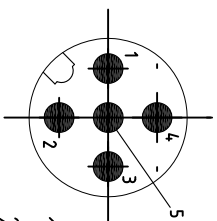
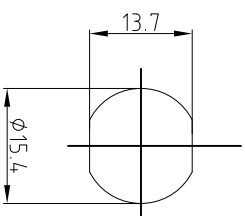


MALE END VIEW

SUGGESTED PANEL CUT OUT

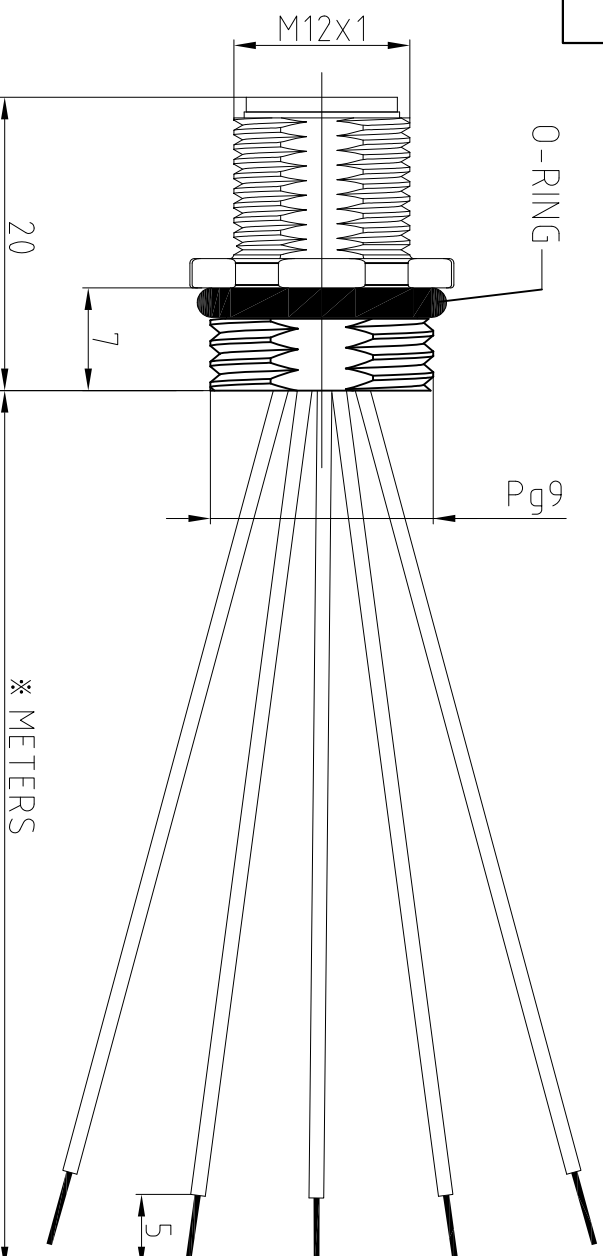
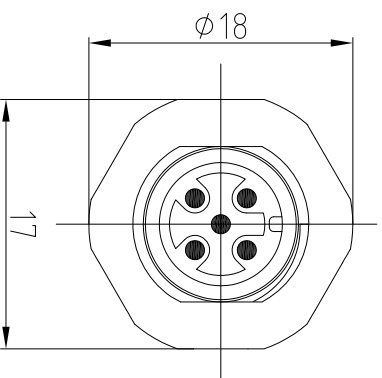


1=BN
2=WH
3=BU
4=BK
5=GN/YE

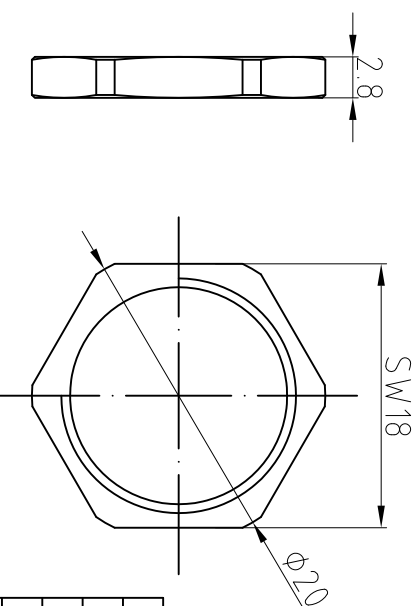


SPECIFICATIONS

CONTACT CARRIER MATERIAL/COLOR	TPU/BLACK
CONTACT/PLATING	BRASS/GOLD
HOUSING MATERIAL/PLATING	BRASS/NICKEL
O-RING MATERIAL	NBR
OPERATING CURRENT	4 A
OPERATING VOLTAGE	250 V
CONDUCTOR INSULATION MATERIAL	PVC
NUMBER OF CONDUCTORS (AWG)	4 x 22+1x20 AWG
OPERATING TEMPERATURE	-20°C — +85°C
PROTECTION CLASS	IEC IP67



* METERS



CABLE LENGTH	TOLERANCE
ALL LENGTHS	±4%(OR 50mm) OF LENGTH -0%(OR 0mm) OF LENGTH WHICHEVER IS GREATER
STRIP LENGTH	TOLERANCE
0 - 7mm	± 10mm
8 - 29mm	± 15mm
30 - 49mm	± 20mm
50 - 69mm	± 30mm
70 - 100mm	± 40mm
over 100mm	± 50mm

UNIT OF MEASUREMENT
MILLIMETER

Tianjin Geneuo Technology Co., Ltd



Approved: Date: 2018.4.27

Process:YJF Date:2018.5.24

Scale: 1:1

Description: FEZ521-*

Checked:Y Date:2018.5.3
Designed:LXH Date:2018.4.27

3RD Angle Projection



www.gsee-tech.cn
www.gsee-tech.com

REV
A

REV	COUNT	DESCRIPTION OF REVISIONS	BY	CHECKED	DATE